

## ST. JOSEPH'S NATIONAL SCHOOL

# Additional Support Policy Support for All

## January 2020

### **Contents**

Introductory Statement	Page 1
School Information	Page 1
Rationale	Page 1
Belief Statement	Page 1
Aims of the Policy	Page 2
Roles and Responsibilities	Page 2
Identifying Pupils with Additional Needs	Page 6
Information Gathering and Assessment	Page 12
Inventory of Test Materials	Page 12
Prevention and Early Intervention Strategies	Page 12
Meeting the Needs and Allocating Resources	Page 13
Timetabling	Page 15
Tracking, recording and reviewing progress	Page 15
Supervision/Child Protection	Page 17
Ratification and Communication	Page 17
Implementation and Review	Page 17

## **Introductory Statement**

Our SEN policy was coordinated by the SET team, in consultation with our NEPS psychologist Joan Heduan. This policy is the reviewed and amended policy completed by a working group in October 2018, in accordance with Circular No 0013/2017. It will be circulated to staff and families when finalised in.

## **School Information**

St. Joseph's opened in 1957 under the patronage of Sister's of Mercy. We endeavour to create a positive and inclusive atmosphere that respects all children, regardless of their religious, social, cultural background or special educational needs.

Our school is DEIS Band 1 with a high population of EAL families enrolled in our school. Given the demographics of the local population and the semi-transient nature of enrolment in our school, our provision of support and timetables are regularly reviewed.

## **Rationale**

The purpose of this policy is to:

- provide practical guidance to staff, parents and other interested parties about our SEN procedures and practices.
- outline the framework for addressing additional needs in our school.
- comply with legislation (Education Act 1998, Equal Status Act, 2000)
- fulfil DES circular 0013/17 -Circular to the Management Authorities of all Mainstream Primary Schools; Special Education Teaching Allocation, and new 2017 Guidelines for Primary Schools: Supporting Pupils with Special Educational Needs in Mainstream Schools).

## **Belief Statement**

Our school is dedicated to the implementation of an effective system for meeting the needs of all our pupils in accordance with our mission statement, the resources provided by the DES and the Board of Management.

We believe that all our children have a right to an education, which is appropriate to their individual needs. We strive to ensure that all our children feel that they are a valued part of our school community. We are fully committed to the principle of inclusion. This policy aims to enable children with Special Education Needs (SEN) and children whose first language is not English, to become fully integrated members of our school community. This will be achieved by careful consideration of the needs of each child and by either modifying the environment, activities or by providing support that will help the child to participate in them.

## **Aims of the Policy**

This policy aims to outline our procedures and practices of how we:

- identify additional needs that our pupils may have
- allocate resources to effectively meet the needs of children with additional needs
- divide the roles and responsibilities among our school community in relation to pupils with additional needs
- track, monitor, review and report on the progress of children with additional needs
- communicate information between the SET team, principal, staff and parents/guardians

## **Roles and Responsibilities**

### ***Board of Management:***

The BOM oversees the development, implementation and review of school policy on SEN. They also ensure that adequate classroom accommodation, secure storage space and effective teaching resources are provided.

### ***Principal: Mrs Oral Egan***

The *Learning Support Guidelines (2000, P.39)* outlined the principal has overall responsibility for SEN procedures and practices in the school. The new allocation model states the principal's leadership role is central and includes the following;

The school principal should

- Implement and monitor the school's Additional Needs policy on an on-going basis.
- Co-ordinate teachers' work to ensure continuity of provision for all pupils
- Ensure that whole-school procedures are established to facilitate the effective involvement of parents, pupils and external professionals/agencies
- Ensure that effective systems are implemented to identify pupils' needs and that progress is monitored methodically
- Facilitate the continuing professional development of all teachers in relation to education of pupils with special educational needs, and ensure that all school staff (class teachers, special education teachers and special needs assistants) are clear regarding their roles and responsibilities in this area
- assign responsibility for coordinating additional support to an identified teacher (i.e. SENCO)
- communicate with the SENO (Special Education Needs Organiser)
- oversee a whole school assessment and screening programme
- allocate time within the school timetable for the SET team to plan and consult with teachers and parents
- inform staff about external agencies and provide information on continuing professional development in the area of SET
- meet with parents regarding any concerns about their child and update them regarding their progress

**SEN Co-ordinator: Ms Ruth Sheridan**

SEN co-ordinator (SENCO) should:

- communicate with the principal in relation to SEN matters on an on-going basis
- liaise with external agencies about the provision for pupils with additional needs
- liaise with the NEPS psychologist, the SET team and class teachers to prioritise children for psychological assessments (NEPS)
- liaise with SEN Class Co-ordinators to identify, support and monitor children with additional needs
- co-ordinate regular SET team planning meetings to ensure effective communication and support for children with additional needs
- collaborate with the SET team in creating timetables for additional support
- meet with parents regarding any concerns about their child, advise parents on procedures for availing of special needs services and update them regarding their progress
- co-ordinate the whole-school standardised testing at each class level
- co-ordinate the screening of pupils for additional support, using the results of standardised tests
- select children for external diagnostic assessment, where parental permission has been sought and granted
- oversee the tracking system of test results on password-protected Aladdin software to monitor the progress of pupils
- maintain lists of pupils who are receiving additional support

**Class Teacher:**

Class teachers have primary responsibility for the teaching and learning of **all** pupils in his/her class, including those selected for additional support. They should

- implement teaching programmes which optimise the learning of all pupils and, to the greatest extent possible, prevent the emergence of learning difficulties
- create a positive learning environment within the classroom
- differentiate teaching strategies, approaches and expectations to the range of experiences, abilities, needs and learning styles in their class
- administer and correct standardised tests of achievement in literacy and numeracy, following the school's guidelines
- discuss outcomes of standardised testing with SEN Co-ordinators to assist in the selection of children for supplementary teaching
- meet with parents regarding any concerns about their child and update them regarding their progress
- gather information and assess children presenting with needs to inform teaching and learning using the Continuum of Support
- open a Pupil Support File once additional needs have been identified and require classroom support
- develop classroom support plans for children in receipt of Classroom Support
- meet with Special Education Teachers, parents/guardians and other staff members to identify priority learning goals for each pupil in receipt of School Support Plus collaborate with Special Education Teachers and relevant staff to develop a file for each pupil in receipt of School Support Plus {SSP}
- regularly meet with Special Education Teachers, relevant staff to review SSP
- meet regularly with Special Education Teachers, relevant staff and parents to review SSP

- where applicable, collaborate with the SET team regarding teaching aims and activities for team teaching
- adjust the class timetable to ensure that children in receipt of supplementary teaching will not be absent for the same subject/activity during each session
- co-ordinate the role and responsibilities of the SNA in relation to the needs of pupils with SEN within the class(es) to which they are assigned
- Collaborate with all staff involved with the SEN child that has excess to a SNA in order to compile the students Personal Pupil Plan.

### ***Special Education Teacher (SET)***

The SET teacher should:

- familiarise themselves with a wide range of teaching approaches, methodologies and resources to cater for particular learning styles and to meet a variety of need
- assist in the implementation of a broad range of whole school strategies aimed at prevention and early intervention
- collaboratively develop Individual file for each pupil selected for school support teaching with class teachers and other staff
- meet with class Teachers, parents/guardians and other staff members to identify priority learning goals for each pupil in receipt of School Support Plus.
- collaborate with class teachers and relevant staff to develop a file for each pupil in receipt of School Support Plus
- regularly meet with class teachers, relevant staff to review SSP
- meet twice a year with class teachers, relevant staff and parents to review School Support Plus
- update and maintain planning and progress records for each individual or group of pupils in receipt of school support
- provide supplementary teaching for literacy and numeracy on a withdrawal and in-class support basis
- support whole-school procedures for screening
- administer and interpret diagnostic tests and inform class teachers and parents of the outcomes
- meet with parents regarding any concerns about their child and update them regarding their progress
- co-ordinate class groups and offer advice and support to class teachers regarding pupils on their caseload
- discuss the needs and progress of children on their caseload at planning meetings
- provide necessary information to a SEN pupil's receiving school once a transfer letter has been received
- Support the class teacher with SEN child that has excess to a SNA to compile the students Personal Pupil Plan.

### ***Special Needs Assistants:***

The duties of the SNA carried out according to the guidelines for Special Needs Assistants from the Department of Education and Skills and under the direction of the principal/class teachers, the SNA will meet the care needs of the SEN pupils to which they have been assigned. (Circular 10/76).

The SNA should

- support the needs of pupils in effectively accessing the curriculum
- contribute to the quality of care and welfare of the pupils

- support learning and teaching in the classroom
- attend, where possible, training courses/workshops provided by the BOM
- attend IEP meetings and/or meetings with relevant professionals, when necessary
- ensure the safety of the SEN pupils in the schoolyard, and be present for the duration of the yard breaks along with the teachers on duty
- maintain a record of support provided to their SEN pupil
- accompany SEN pupil to supplementary lessons when appropriate
- Support the class teacher with SEN child that has access to a SNA to compile the student's Personal Pupil Plan.

***Parents/Guardians:***

Collaboration and sharing of relevant information between home and school are essential elements of our SEN policy. Parents/Guardians through their unique knowledge of their own children have much to contribute to their child's learning.

Parent/Guardian should:

- share any information, reports or reports pending from health professionals, and/or concerns regarding their child's development. Copies of professional reports should be provided to the school at the enrolment stage
- support the work of the school and keep the class teacher informed of the progress and challenges they observe in their child's learning
- attend meetings arranged by the class teacher or SET team
- support the targets outlined in their child's support plans and engage in all suggested home-based activities
- inform the post-primary school of their child's needs, at the transition stage

***Pupils:***

Pupils who are in receipt of supplementary teaching should, as appropriate:

- be given the opportunity to contribute to the setting of the medium and short-term learning targets
- become familiar with the targets that have been set for them
- develop 'ownership' of the skills and strategies that are taught during supplementary teaching and learn to apply these learning strategies and skills to improve their own learning
- contribute to the evaluation of their progress by participating in appropriate assessment activities, including self-assessment

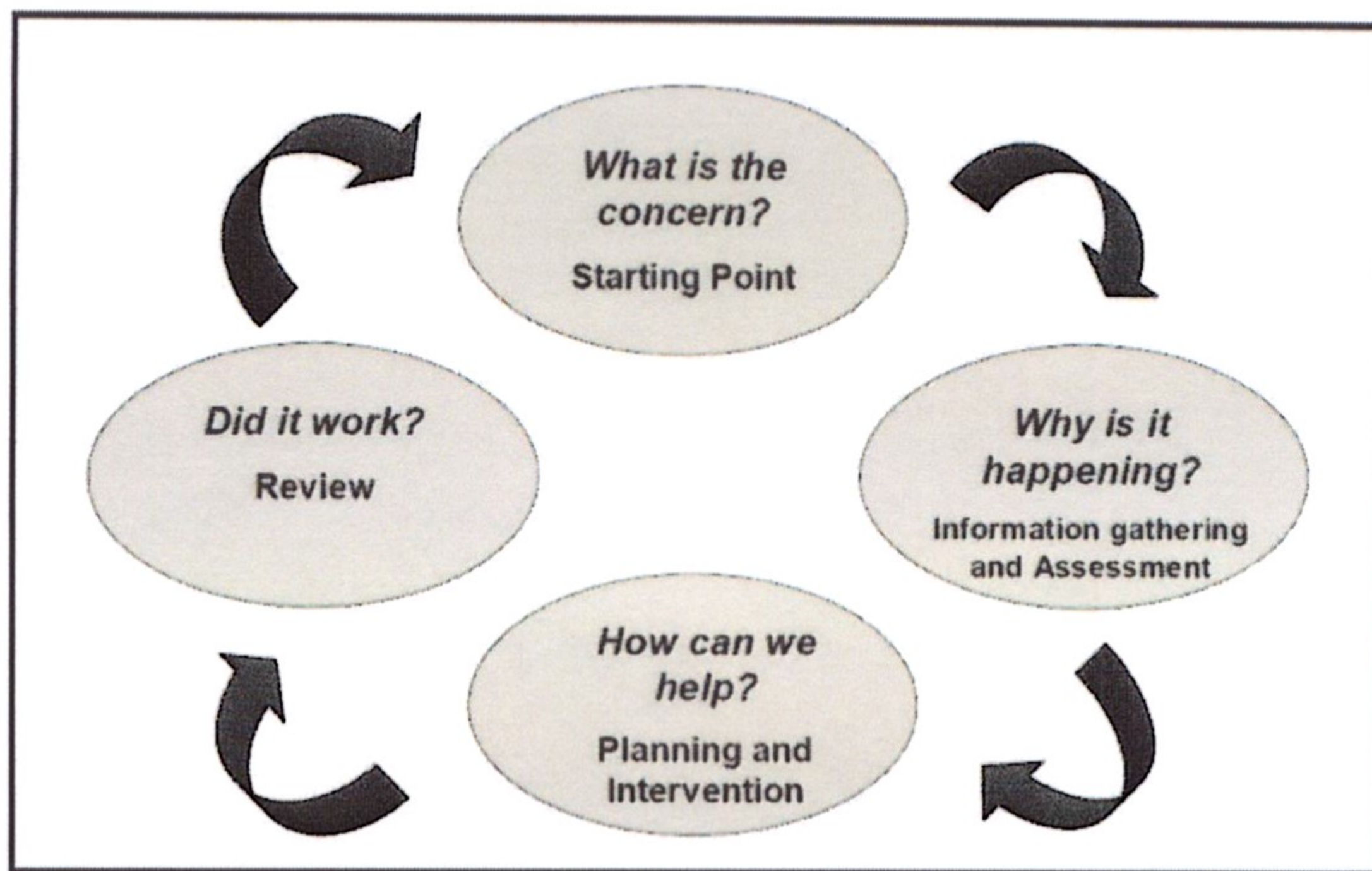
## Identifying Pupils with Additional Needs

### Continuum of Support

We use the Continuum of Support Framework set out by the Department of Education to identify and support children with additional needs. Like this framework, we recognise that special educational needs occur along a continuum, ranging from mild to severe, and from transient to long-term and that pupils require different levels of support depending on their identified additional needs. By using this framework, it helps us implement a staged approach to ensure that our support and interventions are incremental, moving from class-based interventions to more intensive and individualised support, and are informed by careful monitoring of progress.

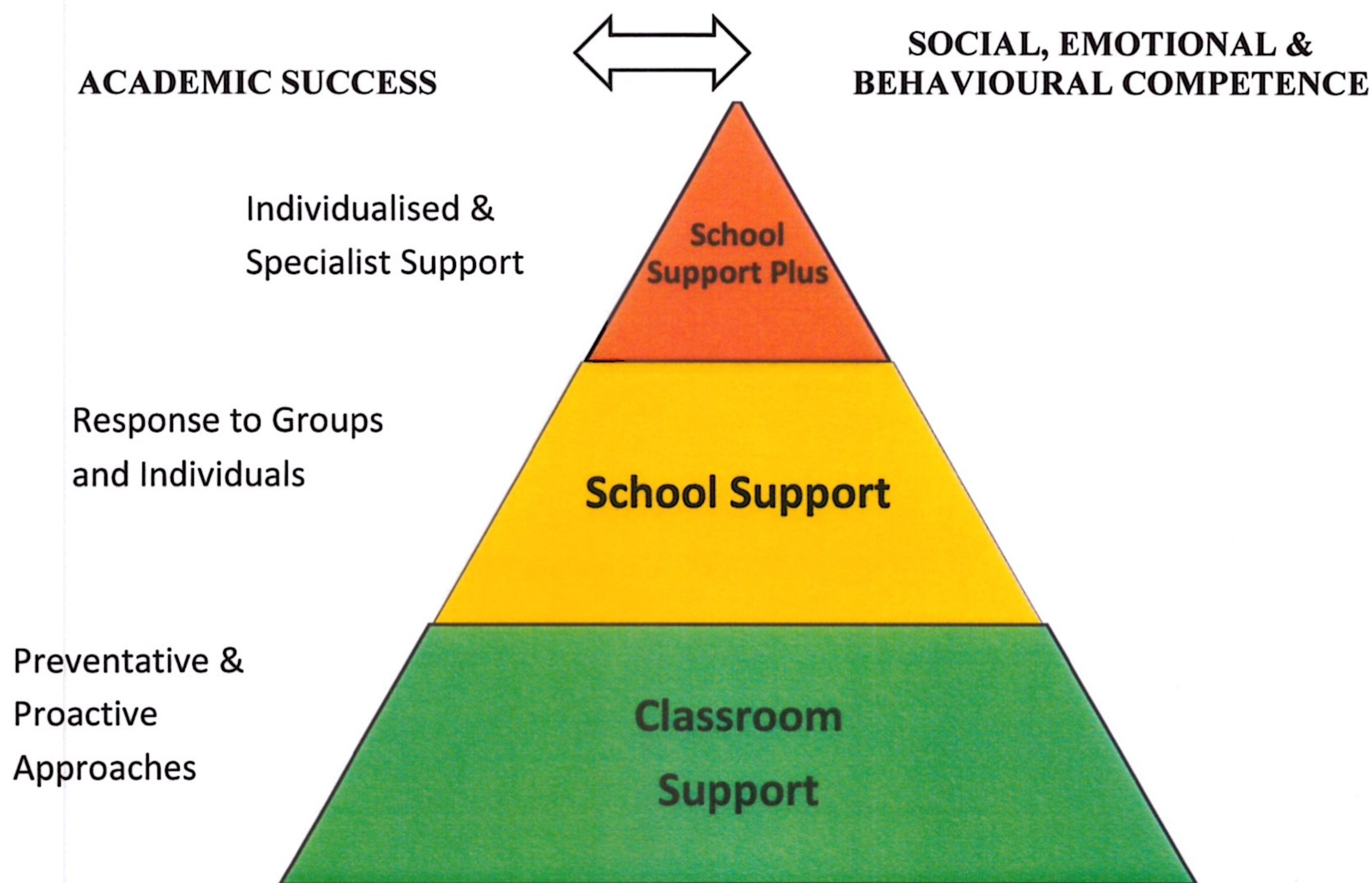
The Continuum of Support is a problem-solving model of assessment and intervention that enables us to gather and analyse data, as well as to plan and review the progress of individual pupils.

This problem-solving process is illustrated as follows:



Identification of educational needs is central to our policy and the new allocation model. By using the Continuum of Support framework, we can identify pupils' educational needs, to include academic, social and emotional needs, as well as needs associated with physical, - sensory, language and communication difficulties. This, in turn, allows us to identify and respond to needs in a flexible way.

The Continuum of Support suggests the following levels of support:





### **STAGE 1 CLASSROOM SUPPORT**

Classroom Support is the most common, and typically the first response to emerging needs. It is a response for pupils who have distinct or individual educational needs and who require approaches to learning and/or behaviour which are **additional to or different** from those required by other pupils in their class. Problem-solving at this level typically begins when a parent or teacher has concerns about an individual pupil. The teacher, Class Co-ordinator and parents discuss the nature of the problem and consider strategies which may be effective. Classroom Support incorporates the simple, informal problem-solving approaches commonly used by class teachers to support emerging needs.

### **STAGE 2 SCHOOL SUPPORT**

In some cases, interventions at classroom support level are not enough to fully meet the pupil's special educational needs. School Support may, therefore, be required. The class teacher needs to involve the Special Education Teacher Team (SET Team) in the problem-solving process at this point and it involves more systematic gathering of information and the development and monitoring of a School Support Plan.

### **STAGE 3 SCHOOL SUPPORT PLUS**

If a pupil's special educational needs are **severe and/or persistent**, they are likely to need intensive support. School Support Plus will generally involve personnel outside the school team in the problem solving, assessment and intervention process. However, the information from Classroom and School Support work will provide the starting point for problem-solving at this level. Classroom support and school support will continue to be an important element of his/her individual education plan.

The flow diagrams below outline how we gather information to identify needs and support children with additional needs. A more comprehensive explanation of each stage can be in the Continuum of Support – Guidelines for teachers

[https://www.education.ie/en/Schools-Colleges/Services/National-Educational-Psychological-Service-NEPS-/neps\\_special\\_needs\\_guidelines.pdf](https://www.education.ie/en/Schools-Colleges/Services/National-Educational-Psychological-Service-NEPS-/neps_special_needs_guidelines.pdf)

While most pupils' initial needs should be met through classroom based interventions, a small number of pupils may arrive at school with difficulties that are more significant or which are immediately recognised. In such cases, it may be more appropriate to begin with a School Support or School Support Plus Plan. Most of the pupils to whom this applies will be new to the school. However it may also apply for some pupils following an event which impacts significantly on them in school. \*\*

**CLASSROOM SUPPORT PROCESS** **STAGE 1**

Starting Point  
 Concern is expressed by parent/teacher or other professional.  
 teacher considers....  
 Can concerns be met through whole class teaching approaches and differentiation?

Yes

Continue with differentiated teaching approaches

Discontinue Classroom Support Plan

No

**Classroom Support Process**  
 Class teacher informs their Class Co-ordinator and together they complete formal and informal information gathering and assessment to inform Classroom Support Plan

**Planning and Intervention**  
 Classroom Support Plan is agreed and is implemented by class teacher and parents if appropriate

Class Teacher and Class Co-ordinator Redefine Problem, Review and Amend Classroom Support Plan

**Review Classroom Support**  
 Classroom Support Plan is reviewed after a set time. Classroom teacher and Class Co-ordinator decides to...

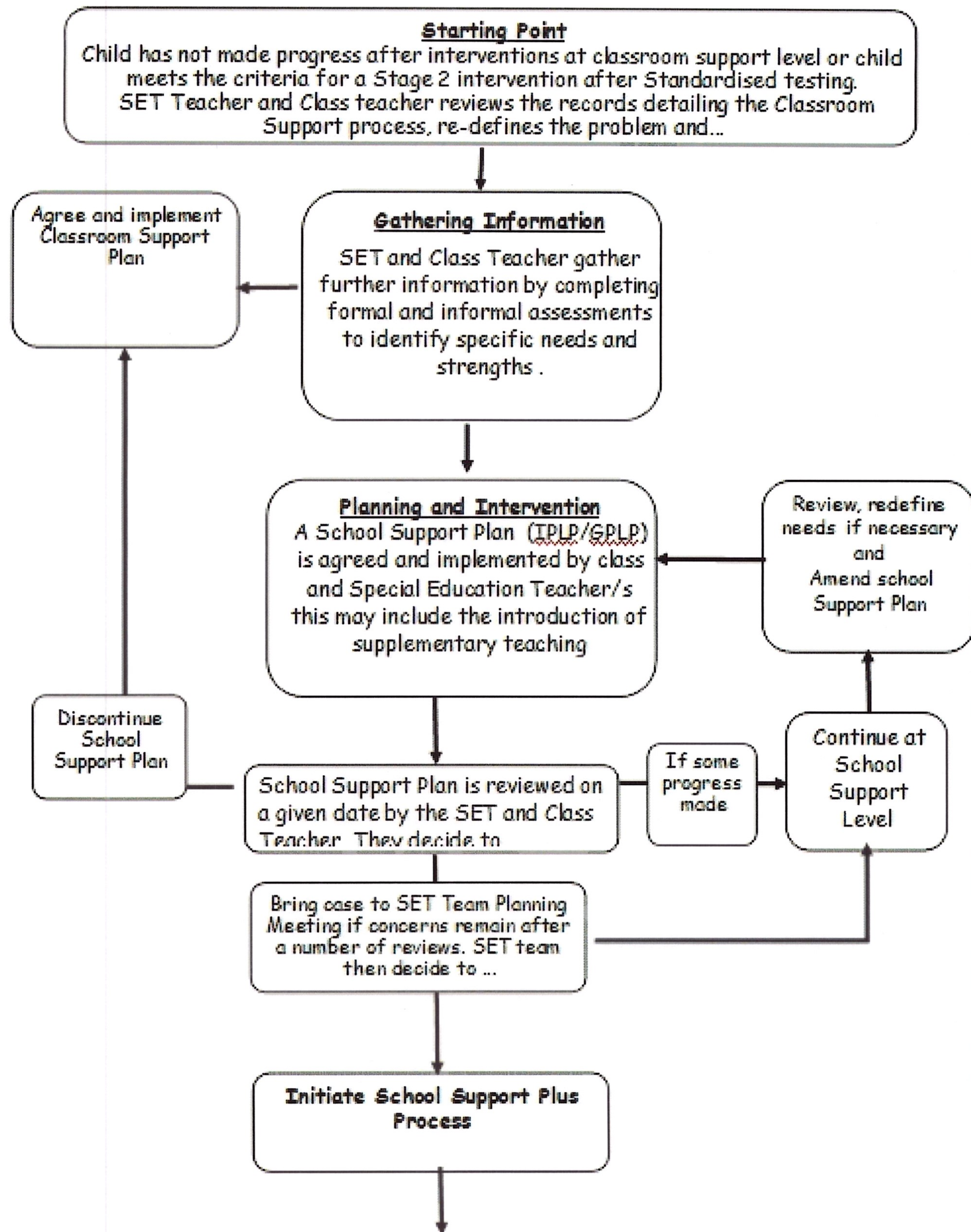
Some progress made

Continue at Classroom Support Level

If concerns remain after a number of reviews Class Co-ordinator brings case to SFT Team Planning Meeting, the team reviews all information and decides to ...

**Initiate School Support Process**

\* adapted from NEPS Continuum of Support. For more detailed steps see page 12 - 15 of the continuum of support - Guidelines for teachers



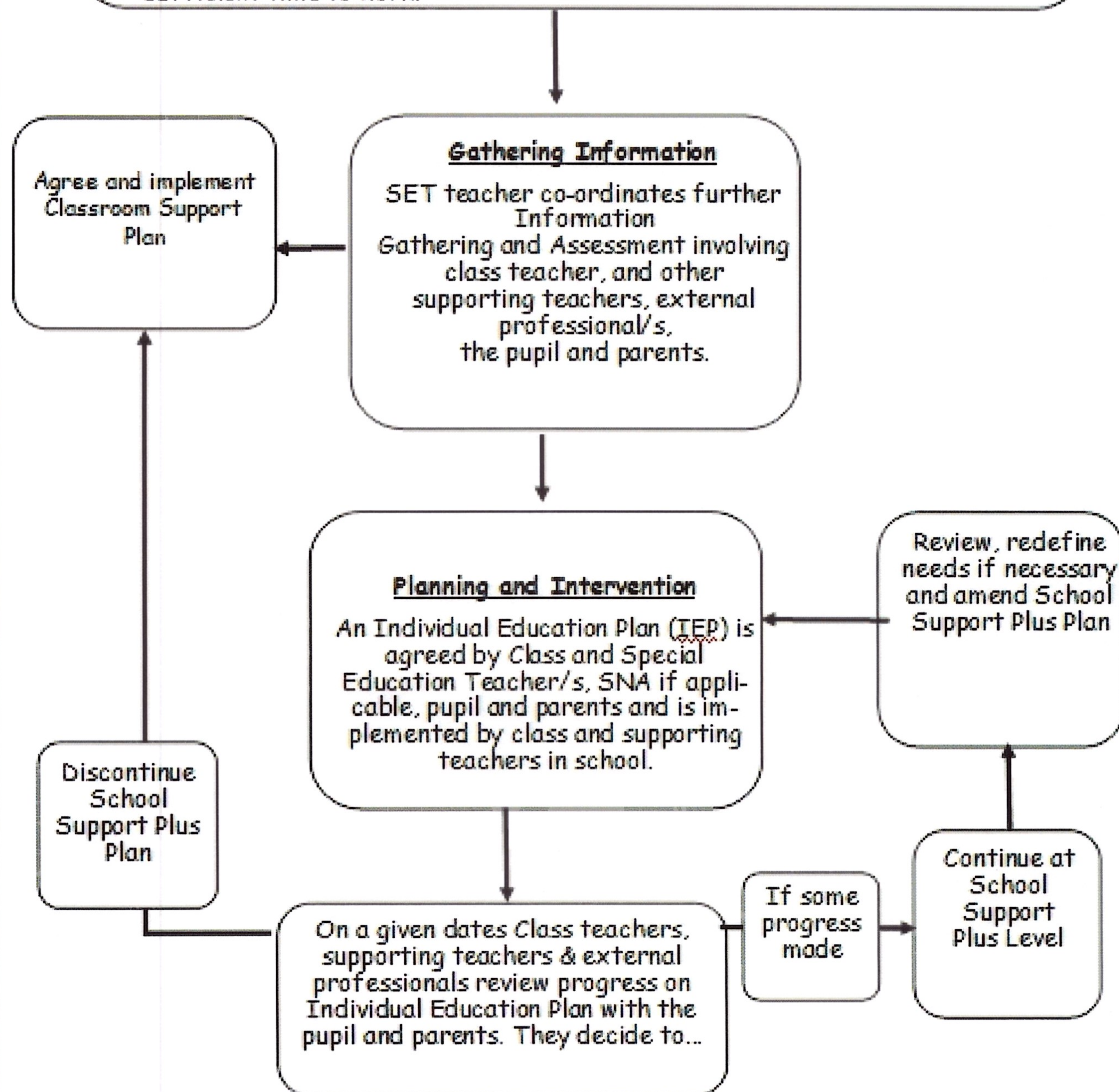
\* adapted from NEPS Continuum of Support. For more detailed steps see page 22 - 25 of the continuum of support - Guidelines for teachers

**Starting Point**

Child has not made progress after interventions at school support level or child meets the criteria for a Stage 3 intervention after a diagnosis from an outside agency.

SET and Classroom teacher considers...

- Are the pupils needs causing significant barriers to learning or impeding development of social relationships?
- Is progress inadequate despite support provided?
- Were interventions: based on evidence from assessment; well planned and given sufficient time to work?



\* adapted from NEPS Continuum of Support. For more detailed steps see page 32 - 35 of the continuum of support - Guidelines for teachers

## Information Gathering and Assessment

Assessment is part of what a class teacher does on a daily basis for all children. Some methods include self-assessment, questioning, and teacher observation, portfolios of work and teacher-designed tasks and tests. The information gathered enables the teacher to plan learning experiences based on the appropriate objectives from the curriculum.

In order to identify pupils who may require supplementary teaching, screening; including standardised testing, is carried out in all classes annually and further diagnostic testing may need to take place. The information gathered from these formal assessments is then used to inform decisions for support and pupil's support plans (CSP, IPLP/GPLP and IEP)

### Assessment and Screening Tests:

In our school we carry out the following assessment procedures:

- Junior Infants: Observation, Checklists, Termly Math Assessment books( Nfer 5 or BIAP on selected pupils)
- Senior Infants: Observation, Checklists Drumcondra Early Numeracy / Literacy
- 1st class: Observation, Checklists, Micra T, Sigma T, Drumcondra Spelling
- 2nd class: Observation, Checklists Micra T, Sigma T, Drumcondra Spelling, NNRIT/NVRT
- 3rd class: Observation, Checklists, Micra T, Sigma T Drumcondra Spelling.
- 4th class Observation, Checklists, Micra T, Sigma T Drumcondra Spelling.
- 5th class: Observation, Checklists, Micra T, Sigma T, Drumcondra Spelling and NNRIT/NVRT.
- 6th class: Observation, Checklists, Micra T, Sigma T and Drumcondra Spelling.

We continually review the assessment and screening tests that we use in order to balance the needs of our pupils and the need to provide information for appropriate support. Therefore we may deviate from the above list prior to the review date.

## Inventory of Test Materials

### Screening Tests

- Belfield Infant Assessment Profile (BIAP)
- Middle Infant Screening Test (MIST)
- Micra-T
- Sigma-T
- New Non- Reading Intelligence Test (NNRIT)
- Non-Verbal Reasoning Test (NVRT)
- Dyslexia Screening Test (DST – J)

### Diagnostic Tests

In our school the following tests are available for administration:

- Jackson Phonics Test
- LARR Reading Test
- Diagnostic Reading Programme
- RAIN Sentence Reading Test
- Bangor Dyslexia Test
- Aston Index
- Quest Literacy and Maths tests
- Maths Recovery screening tests
- York Assessment of Reading for Comprehension (YARC)
- Reading Recovery Observation Survey
- Assessment of Comprehension and Expression
- Non-Word Reading Test
- Single Word Spelling Test

## Prevention and Early Intervention Strategies

Our strategies for preventing learning difficulties include:

- The development of agreed approaches to the teaching of Literacy and Numeracy in order to ensure progression and continuity from class to class.
- Provision of additional support in language development and any relevant early literacy and mathematical skills to pupils who need it.
- Ongoing structured observation and assessment of the language, literacy and numeracy skills of pupils in the infant classes to facilitate early identification of possible learning difficulties.
- Close collaboration and consultation between the Infant Teacher and the SET team.
- Promotion of literacy e.g. Print-rich environment, First Steps Literacy Programme, DEAR (Drop Everything and Read
- Promotion of Numeracy e.g. Ready Set Go Maths, Hands-on approach, Maths for Fun
- Parental involvement in promoting literacy and numeracy e.g. Maths for Fun,
- Differentiation - adapting the learning environment.
- In-class support from the SET team.
- Team Teaching/Aistear.
- Withdrawing individuals/groups.
- Reading Recovery
- Maths Recovery

## Meeting the Needs and Allocating Resources

Once pupils needs have been identified, Special Education Teachers (SETs) are deployed to address these needs as required. We deploy SETs in a variety of ways in order to effectively meet pupils' needs. We aim to strike a balance between in-class support, group and individual support while ensuring that the needs of children with additional needs are met inclusively.

Importantly, the level and type of support reflect the specific targets of individual pupils as set out in their support plans and are informed by careful monitoring and review of progress. In this way, following a period of intervention, some pupils may no longer require additional teaching supports; some may require the same level, while others may require more intensive supports.

In planning the allocation of additional teaching supports, the over-riding principle is that resources are deployed to address the identified needs of pupils. Importantly, those with **the highest level of need should have access to the greatest level of support**. We consider methodologies best suited to promoting meaningful inclusion such as differentiation, heterogeneous grouping, team-teaching and small group teaching. In addition to literacy and numeracy difficulties, many pupils will have specific needs in such areas as oral language, social interaction, behaviour, emotional development, motor skills and application to learning.

At the end of each term the SEN Coordinators can meet class teachers and SET to review children's needs, the resources in place and progress made using the Continuum of Support problem-solving model of assessment and stage approach flow charts. As a SET team, we review support and allocate resources for the subsequent term.

We cross-reference the needs of pupils at School Support and School Support Plus levels and consider common needs that can be met by grouping, to ensure effective and efficient teaching and learning approaches.

## SELECTION PROCESS FOR ALLOCATING ADDITIONAL TEACHING SUPPORT

Stage 3 School Support Plus	<ol style="list-style-type: none"> <li>1. Children with identified complex needs by an external professional such as a                             <ul style="list-style-type: none"> <li>• Physical Disability</li> <li>• Hearing Impairment</li> <li>• Visual Impairment</li> <li>• Emotional Disturbance</li> <li>• Moderate General Learning Disability</li> <li>• Severe/Profound General Learning Disability</li> <li>• Autistic Spectrum Disorder</li> <li>• Assessed Syndrome</li> <li>• Specific Speech and Language Disorder/Impairment</li> </ul> </li> </ol>	Individual Education Plans	<p><b>Type of Support</b>                      In-Class Support                      Team-Teaching                      Group Withdrawal                      Individual                      Withdrawal</p> <p><b>Personnel</b>                      SET teacher                      Class Teacher                      Outside Agencies</p>
Stage 2 School Support	<ol style="list-style-type: none"> <li>2. Prevention and Early Intervention Programs (Aistear, Reading/Maths Recovery, Infant Activities )</li> <li>3. Children in JI &amp; SI whom English is an additional language or children whom English is an additional language newly arrived in Ireland in 1st – 6th</li> <li>4. Children on or under the 10th Percentile in Literacy Standardised Tests</li> <li>5. Children with an identified need assessed by external professionals who are not on or below the 10th percentile in Literacy such as                             <ol style="list-style-type: none"> <li>1. Borderline Mild General Learning Disability</li> <li>2. Mild General Learning Disability</li> <li>3. Specific Learning Disability</li> <li>4. Attention Deficit Disorder/ Attention Deficit Hyperactivity Disorder</li> </ol> </li> <li>6. Children on or under the 10th Percentile in SIGMA T</li> <li>7. Children with a identified need by external professionals who are not on or below the 12th percentile in Numeracy                             <ol style="list-style-type: none"> <li>1. Borderline Mild General Learning Disability</li> <li>2. Mild General Learning Disability</li> <li>3. Specific Learning Disability</li> <li>4. Attention Deficit Disorder/ Attention Deficit Hyperactivity Disorder</li> </ol> </li> <li>8. Children who have not made adequate progress after interventions at Stage 1</li> <li>9. Children in 1st – 6th who have not made adequate progress after EAL interventions</li> </ol>	Group or Individual Profile and Learning Programme	<p><b>Type of Support</b>                      In-Class Support                      Team-Teaching                      Group Withdrawal                      Individual                      Withdrawal</p> <p><b>Personnel</b>                      SET teacher                      Class Teacher</p>

## **Timetabling**

When drawing up timetables it is important to remember that:

- timetables should be continually reviewed
- children should not miss the same subject each time they are withdrawn
- if a pupil is unavailable for their supplementary session due to special circumstances, the Special Education Teacher will attempt to reschedule the session with the co-operation of another teacher.
- interruptions to classes/classrooms should be kept to a minimum.

## **Tracking, recording and reviewing progress**

Provision for pupils with special educational needs is enhanced through clear identification processes and careful planning of interventions to address academic and/or personal and social development needs. Identification of needs, planning, target-setting and monitoring of outcomes are essential elements of an integrated and collaborative problem-solving process.

### **Student Support File**

We use a Student Support File to plan interventions and to track a pupil's pathway through the Continuum of Support. It facilitates us in documenting progress and needs over time and assists us in providing an appropriate level of support to pupils, in line with their level of need. Our Student Support File is based on the NEPS template and is stored on the school's Google drive. All support files should include:

- Cover sheet with pupil's details
- A timeline of actions
- Record of support received
- Standardised/ Diagnostic test scores
- Support plans (See below)
- Checklists

A class teacher or class SET should open a Student Support File once a child is placed on Stage 1 – Classroom Support on the continuum. This is stored digitally on the server in Pupil Records and a paper copy is stored in the class teacher's assessment folder and in filing cabinet in the child's file in the office. At the end of the year, a copy of the information gathered over the year is replaced in the Child's file in the office.



## **Support Plans**

We use three different support plans for the three stages of support on the Continuum of Support.

### ***Stage 1 – Classroom Support***

A Support Plan at stage 1 is a **Classroom Support Plan**. (CSP) This is a simple plan which is drawn up by the Class Teacher in collaboration with the SET and outlines the pupil's additional educational needs and the actions, including individualised teaching and management approaches, which will be taken to meet the pupil's needs. The plan may also include home-based actions to be taken by the pupil's parents to support their child's development. The Classroom Support Plan should include a review date. This could be at the end of a school term.

### ***Stage 2 – School Support***

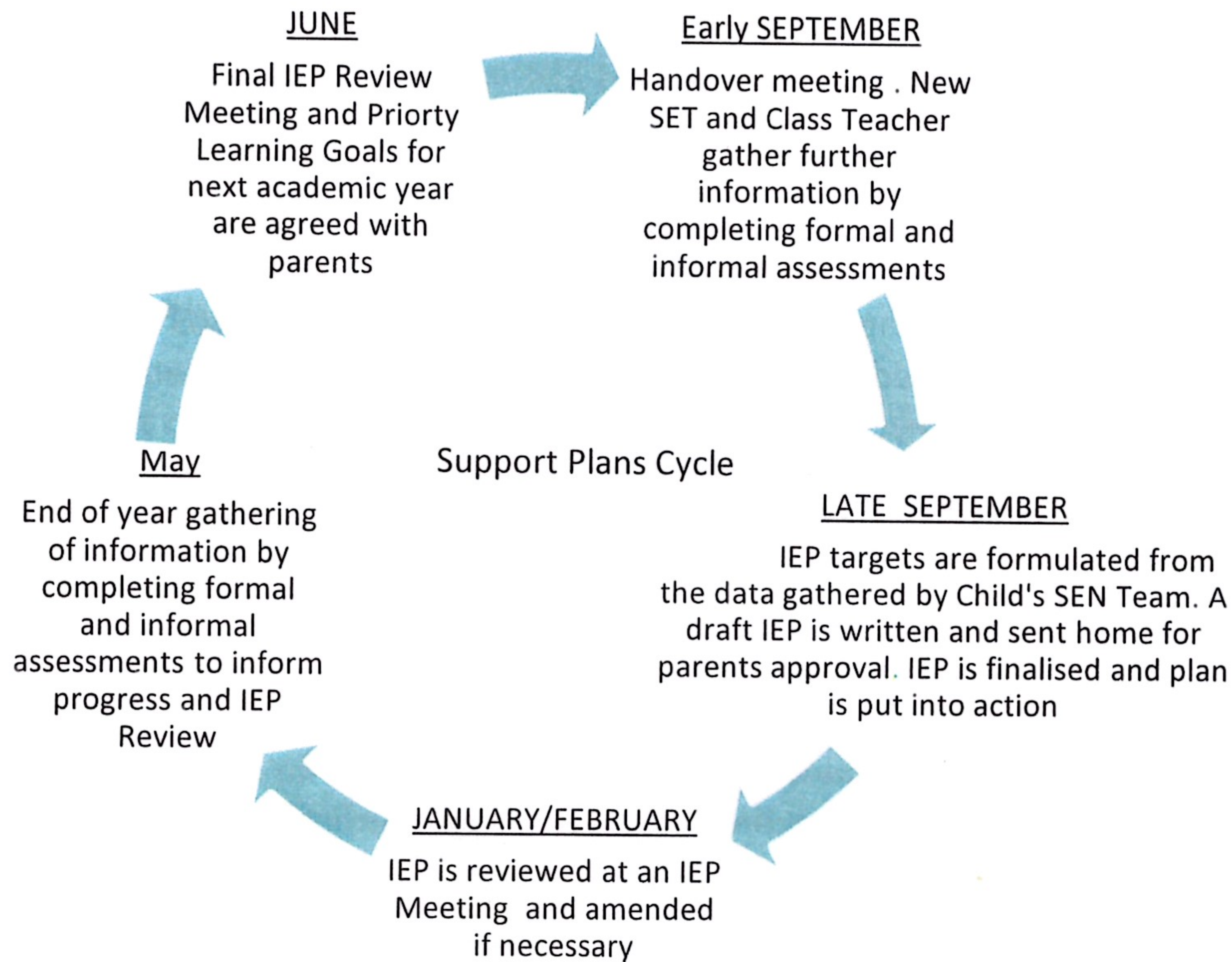
A Support Plan at stage 2 is a **School Support Plan** (SSP). This plan is drawn up by the class teacher and appointed SET teacher. It will set out the nature of the pupil's learning difficulties, define specific teaching, learning and behavioural targets and set a timescale for review. The plan should, for the most part, be implemented within the normal classroom setting and complimented by focused school based intervention programmes. Depending on the nature of the needs and on the school context, additional teaching might be within a small group or individual or a combination of both either in class or on a withdrawal basis. Home-based actions may also be included. After the plan has been drawn up, it should become a working document through the careful monitoring of the pupil's response to the actions taken.

### ***Stage 3 – School Support Plus***

A Support Plan at stage 3 is a **School Support Plus Plan** (SSP) is drawn up by the class teacher and appointed Special Education Teacher(s), in consultation with the child's parents/guardians, professionals external to the school and (if appropriate) the child based on the information gathered. It will set out;

- The nature and degree of the pupil's abilities, skills and talents
- The nature and degree of the pupil's special educational needs and how those needs affect his/her educational development
- The present level of educational performance of the pupil
- The special educational needs of the pupil
- The special education and related support services to be provided to the pupil to enable the pupil to benefit from including:
  - Strategies for supporting the pupil's progress and inclusion in the classroom setting
  - Individual and/or small group/special class interventions/programmes
  - Specific methodologies/programmes to be implemented
  - Specific equipment/materials and/or IT supports, if required to support learning and access to the curriculum
  - Support required from a Special Needs Assistant (SNA), if appropriate
  - The goals which the pupil is to achieve over a period not exceeding 12 months
  - The pupil's priority learning needs, long and short term targets to be achieved, the monitoring and review arrangements to be put in place

Meetings are coordinated by an appointed coordinator. This is usually one of the child's Special Education Teachers. Parents will be invited to at least one out of two meetings depending on the needs of the child.



**Communication between SET Team/Principal/Class Teachers**

SET timetables have been organised so that 2.00 – 3:00 each Friday is our designated co-ordination time. This allows all staff the opportunity to attend pupils support planning meetings, care team meetings, Team Teaching Planning Meetings, SEN Class Coordinator meetings and SEN consultation/planning/review meetings, when necessary. This flexibility ensures adequate cover for class teachers and also facilitates regular SET team planning meetings with the principal.

**Supervision/Child Protection**

- Where pupils receive support on a one-to-one basis, the SET teacher is responsible for ensuring that both they and the pupil are visible through the glass panel in the door.
- Where pupils are withdrawn for support, the SET teacher should collect and return children to their classrooms.
- Where a child has access to an SNA, they may withdraw the child from the class if a plan is in place with the class teacher.

**Ratification and Communication**

This revised policy was ratified by the Board of Management in January 2020

**Implementation and Review**

This policy will be implemented from January 2020. It will be reviewed within the year by the Special Education Team and all staff, pending a proposed review of the New SEN Allocation Model by the Department of Education and Science in 2019.

Signed: Frank Gearty  
(Chairperson)

Date: 28<sup>th</sup> JAN, 2020.